

OVERVIEW & DESCRIPTION
(SHEET 1 OF 2)

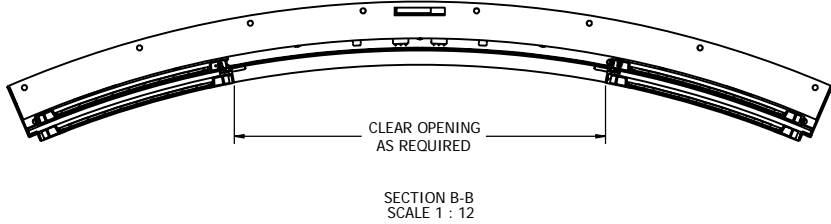
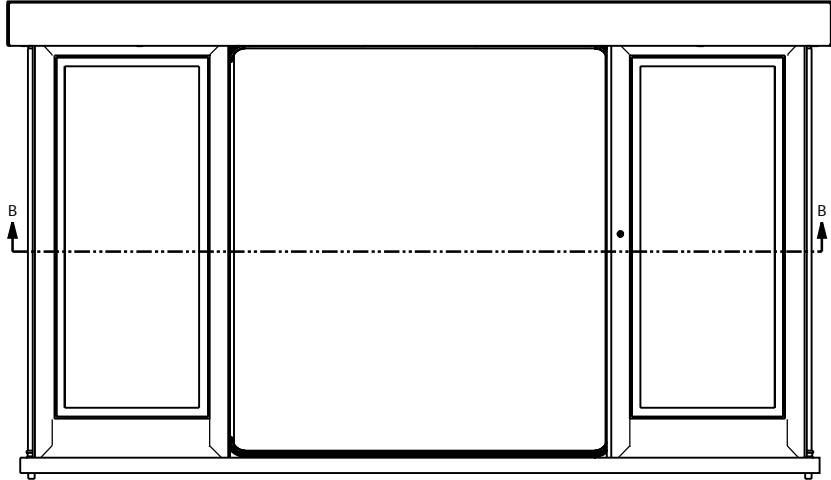
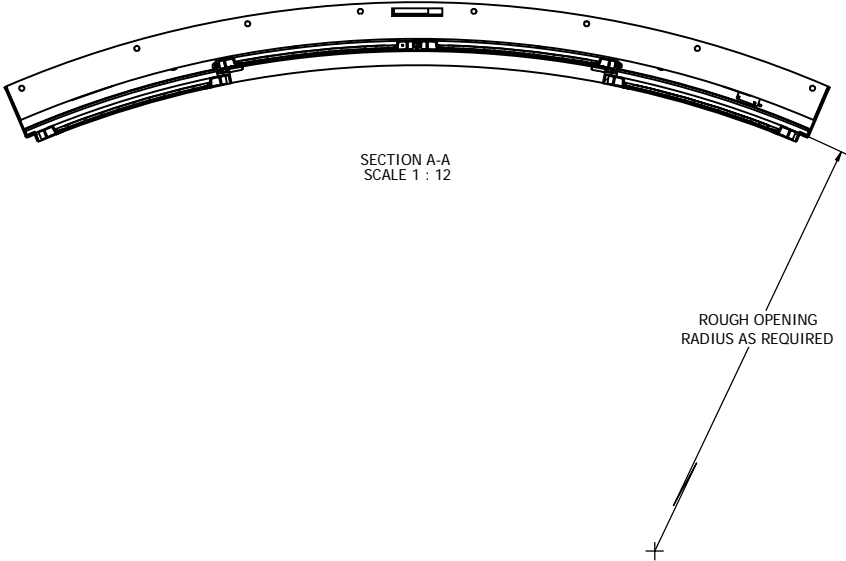
7. THIS DRAWING PROVIDES THE GENERAL CONFIGURATION OF A FREEMAN MARINE AUTOMATED SLIDING DOOR. FOR MORE DETAILED INFORMATION CONTACT FREEMAN MARINE SALES.
6. SIDELIGHT AND SHUTTER OPTIONAL.
5. BI-PARTING WITH OPTIONAL RIGHT HAND ACTIVATION PIEZO SHOWN, LEFT HAND SAME EXCEPT OPPOSITE.
4. ELECTRICAL OPERATING SYSTEM.
3. MITER CORNER PANEL.
2. TOP HUNG SLIDING DOOR WITH WEATHERTIGHT BRUSH SEAL AND AUTOMATIC WATERTIGHT PNEUMATIC SEAL.
1. PREMIUM WATERTIGHT CONSTRUCTION.

NOTES: UNLESS OTHERWISE SPECIFIED.

SPECIFICATIONS SUBJECT TO CHANGE WITHOUT NOTICE.		FREEMAN MARINE EQUIPMENT, INC. 28336 HUNTER CREEK ROAD GOLD BEACH, OR 97444 U.S.A. PHONE: 541-247-7078 FAX: 541-247-2114 WWW.FREEMANMAREQ.COM	
PROJECTION		CLIENT: FREEMAN MARINE	
UNLESS OTHERWISE SPECIFIED DIMENSIONS ARE IN INCHES. TOLERANCES FOR ROUGH AND CLEAR OPENING: ±.125 INCH. ALL OTHERS ARE:		TITLE: MODEL 1736 - CURVED, BI-PARTING, AUTOMATIC SLIDING DOOR	
X XX XXX ANGLES .1 .03 .010 .2*		DRAWN: C. MACCACHERO DATE: _____ CHECKED: OBMAYOS DATE: _____	
INITIAL RELEASE: _____ DRAWN BY: CJM		SIZE: D CAGE CODE: _____ DRAWING NUMBER: 1736-0002	
REV. A: REVISE HEADER TO ACCOMMODATE G-501 DRIVE SYSTEM		SCALE: 1:24 CALC. BY: _____ ACT. BY: _____	
REV. DESCRIPTION: _____ DATE: _____ DRAWN: _____		CONTRACT NO.: _____	
		REV. A	
		SHEET 1 OF 9	

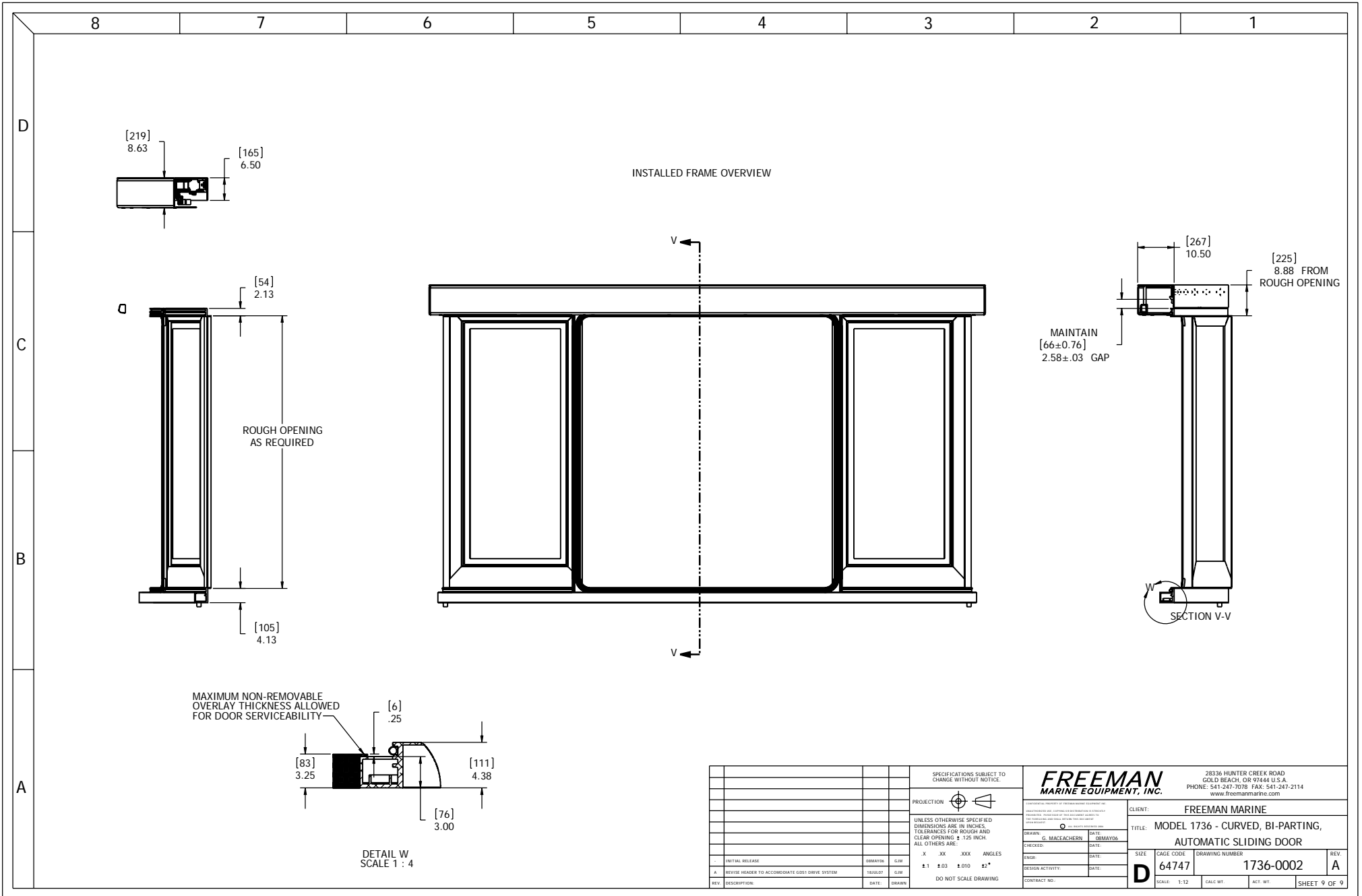
8 7 6 5 4 3 2 1

OVERVIEW & DESCRIPTION
(SHEET 2 OF 2)



D
C
B
A

		SPECIFICATIONS SUBJECT TO CHANGE WITHOUT NOTICE.				FREEMAN MARINE EQUIPMENT, INC.		28336 HUNTER CREEK ROAD GOLD BEACH, OR 97444 U.S.A. PHONE: 541-247-7078 FAX: 541-247-2114 www.freemarine.com	
		UNLESS OTHERWISE SPECIFIED DIMENSIONS ARE IN INCHES. TOLERANCES FOR ROUGH AND CLEAR OPENING: ±.125 INCH. ALL OTHERS ARE:		DRAWN: C. MACCACHERN DATE: _____ CHECKED: S. MAYNOS DATE: _____ ENGR: _____ DATE: _____ DESIGN ACTIVITY: _____ DATE: _____ CONTRACT NO.: _____		CLIENT: FREEMAN MARINE		TITLE: MODEL 1736 - CURVED, BI-PARTING, AUTOMATIC SLIDING DOOR	
INITIAL RELEASE: _____ DRAWN: CJM X .XX .XXX ANGLES ±.1 ±.03 ±.010 ±2° DO NOT SCALE DRAWING		TARGET: CJM		SIZE: D CAGE CODE: _____ DRAWING NUMBER: 1736-0002 REV: A		SCALE: 1:24 CALC BY: _____ ACT. BY: _____ SHEET 2 OF 9			
REV.	DESCRIPTION:	DATE:	DRAWN:						



SPECIFICATIONS SUBJECT TO CHANGE WITHOUT NOTICE.		FREEMAN MARINE EQUIPMENT, INC.		28336 HUNTER CREEK ROAD GOLD BEACH, OR 97444 U.S.A. PHONE: 541-247-7078 FAX: 541-247-2114 WWW.FREEMANMARS.COM	
DRAWN: C. MACCACHERO		DATE:		CLIENT: FREEMAN MARINE	
CHECKED: J. OSBAYOS		DATE:		TITLE: MODEL 1736 - CURVED, BI-PARTING, AUTOMATIC SLIDING DOOR	
ENGR: DATE:		DATE:		SIZE: D	
DESIGNER: DATE:		DATE:		CAGE CODE: 64747	
CONTRACT NO.:		DATE:		DRAWING NUMBER: 1736-0002	
SCALE: 1:12		CALC. BY:		ACT. BY:	
SHEET 9 OF 9				REV. A	